

WASWUG 2008

DOH Standardize Health Codes

Presented by

Glen Patrick, Epidemiologist
Manager, Environmental Epidemiology Section
Office of Environmental Health Assessments
Division of Env. Health Programs
Washington State Dept. of Health
and

Cheryl Hughes RN, MEd
District Nurse
Mount Vernon School District

Table of Contents

DOH Standardized Health Codes	4
DOH Code Cleanup	11
DOH Standard Health Code Merge	14

DOH Standardized Health Codes

WSIPC staff has been working closely with Glen Patrick of the Washington Department of Health (DOH) on an initiative to develop and promote the voluntary use of standardized health codes in the state of Washington. Because WESPaC Student is deployed in over 200 districts around the state, it has been a special focus of the initiative to work toward implementation of such a code set in WSIPC districts. **The goal of the initiative is to provide a common "language" that will promote consistency in tracking of student health conditions and the efforts of school districts to respond to student health issues.** We feel that the opportunity for the WESPaC Student system to contribute positively to the health and safety of the students we serve is of great value to all.

DOH has facilitated the work of a dedicated group of educational health professionals from school districts and our ESDs who have defined a set of standardized codes to be used in four health related data categories. This group, the Washington School Nursing Data Workgroup (WSNDW) is also building support for this initiative among nursing groups and district personnel.

In WESPaC, the relevant data elements are **Health Condition, Office Visit Reason, Disposition, and Health Treatment.**

Disposition Code Reference Table

1	Long Description (30 Char.)	Short Description (15 Char.)	Narrative
R	Rtn to Scheduled Activities	Rtrnd to Act	
G	Rtn to Sched Actvt AA Notified	Rtrnd AA ntfd	
A	Rlsd to Authorized Adult	Rlsd to AA	specify
E	Released to EMS	Rlsd to EMS	
S	Released to School Staff	Rlsd schl stff	specify
P	Rlsd w permission Auth Adult	Rlsd pmssn AA	
W	Departed w/o Authorization	Dptd W/O Auth	

Health Condition Code Reference Table

1st Character (ICD-9 Disease / Body System Category)	
A	Congenital Conditions
B	Hematology (Blood)
C	Cardiovascular
E	Endocrine, Allergy, Immune System, Metabolic, and Nutritional
G	Gastro-Intestinal, Dental, and Oral Conditions
M	Musculoskeletal and Connective Tissue
N	Nervous System
O	Other Conditions
P	Mental or Behavioral Health Conditions (Psycho-social)
R	Respiratory
S	Skin and Subcutaneous Tissue
T	Neoplasms (Tumors)
U	Renal and Genitourinary
Y	Eye and Ear
Z	Other Conditions/Interventions

DOH Health Condition Codes			
AA	Charcot-Marie Tooth Syndrome	NA	Asperger's Syndrome
AB	CHARGE Syndrome	NB	ADHD/ADD
AC	Cleft Lip	NC	Autism
AD	Cleft Lip and Palate	ND	Cntrl Nrvs Stm Cndtn - Othr
AE	Cleft Palate	NE	Cerebral Palsy
AF	Congenital Adrenal Hyperplasia	NF	Developmental Delay
AG	Congenital Cndtn - Othr	NG	Encephalitis
AH	Down's Syndrome	NH	Headache, Migraines
AI	Ehlers-Danlos Syndrome	NI	Headaches, Recurring
AJ	Fetal Alcohol Syndrome	NJ	Hydrocephalus
AK	Prader - Willi Syndrome	NK	Hypersensitivity
AL	Rett's Syndrome	NL	Mental Retardation
AM	Velocardiofacial	NM	Neurofibromatosis
BA	Anemia	NN	Paralysis
BB	Hemophilia	NO	Prphrl Nrvs Stm Cndtn - Othr
BC	Sickle Cell Anemia	NP	Seizure Disorder
BD	Blood Cndtn - Othr	NQ	Sensory Cndtn - Othr
CA	Cardiac Disorder	NR	Sensory Integration Disorder
CB	Cardiac Dysrhythmia	NS	Spina Bifida
CC	Heart Birth Defect	NT	Spinal Cord Injury
CD	Heart Murmur	NU	Traumatic Brain Injury
CE	Hypertension	OA	Declines to Report
CF	Raynaud's Disease	OB	Life Threatening Cndtn
CG	Cardiovascular Cndtn - Othr	OC	No Known Chronic Cndtn
EA	Adrenal Disorder	OD	Organ Transplant
EB	Allergy - Othr	OE	Severity Code A
EC	Allergy - Environmental	OF	Severity Code B
ED	Allergy - Food	OG	Severity Code C
EE	Allergy - Insect	OH	Severity Code D
EF	Allergy - Latex	PA	Anxiety
EG	Anaphylactic Cndtn	PB	Bipolar Disorder

Office Visit Code Reference Table

1 st Character		2 nd Character	
B	Behavioral (Physco/Social/Emotional)	A	Congenital Conditions
D	Illnesses/Sick/Disease	B	Hematology (Blood)
I	Injuries	C	Cardiovascular
N	Needs (Economic)	D	Disease
O	Other	E	Endocrine, Allergy, Immune System, Metabolic, and Nutritional
P	Prevention	G	Gastro-Intestinal, Dental, and Oral Conditions
		M	Musculoskeletal and Connective Tissue
		N	Nervous System
		O	Other Conditions
		P	Mental or Behavioral Health Conditions (Psycho-social)
		R	Respiratory
		S	Skin and Subcutaneous Tissue
		T	Neoplasms (Tumors)
		U	Renal and Genitourinary
		Y	Eye and Ear
		Z	Not Defined

Office Visit Reason Codes			
BPA	Emotional		IOA Other Injury
BPB	Time Out		IRA Choking
DDA	Fever Assessment		ISA Insect Sting/Bite
DDB	Head lice		ISB Bites
DDD	Flu Like Symptoms		ISC Blisters
DEA	Allergy Symptoms - mild		ISD Bruise
DEB	Allergy Symptoms - severe		ISE Burn
DEC	Diabetic Care-Scheduled		ISF Chapped Lips
DED	Diabetic -Unscheduled Care		ISG Cut or Laceration
DEE	Hypoglycemic Symptoms		ISH Nosebleeds
DGA	Diarrhea		ISI Scrape or Abrasion
DGB	Nausea and/or vomiting		ISJ Splinters
DGC	Stomachache/abdominal Pain		IYA Nose Concern
DMA	Backache		NOA Basic Need - Other
DNA	Dizzy		NOB Tired
DNB	Fainting or Feeling Faint		NZA Clothing
DNC	Headache (non-head injury)		NZB Financial
DND	Seizure Symptoms		NZC Food
DOA	Other Illness		NZD Hygiene
DRA	Asthma Symptoms		NZE Shelter
DRB	Breathing problem		OCA Pale or Flushed
DRC	Cold symptoms		OGA Dental or Oral Concern
DRD	Cough		ONA Loss of Consciousness
DRE	Sore throat		OOA Incontinence
DSA	Lump/cyst		OOB Other Complaint
DSB	Rash		OOC Pain
DUA	Menstrual cramps		OSA Skin concern Other
DYA	Earache		OUB Genito-Urinary Concerns
IIA	Poisoning		OYA Ear Concern
IMA	Back or neck injury		OYB Eye Concern
IMB	Sprain / Strain		OZA Health Counseling
IMC	Fracture Symptoms		OZB Scheduled Visit
INA	Head injury		PDA Immunizations
			PZA Screening/Mandated
			PZB Screening/Non-Mandated

Health Treatment Code Reference Table

1 st Character	
C	Student Support
F	First aid
L	Licensed/professional activities
M	Multi-Disciplinary Team
P	Preventative care
E	Education

1	2	Long Description (30 Char.)	Narrative
C	A	Active Listening	Attentive engagement and evaluation of information communicated to nurse. (empathy, use open-ended questions)
C	B	Anticipatory Guidance	Assessment of needs, planning of intervention, and evaluation of the outcome. (wound care/injury care/community emergency numbers for assistance during a crisis)
C	C	Calming Technique	Methods for reducing stress e.g. sitting or lying quietly and comfortably, closing eyes, relaxing all muscles, slow deep breathing. Followed by evaluation and review of process with student to assist in learning how to handle future encounters. (Deep breathing, rest, lights off)
C	D	Caregiver Support	Offer to care giver suggestions on parenting techniques/strategies/discuss normal growth and development/assist with managing health needs or accessing health care system. Assist with housing, food and other basic necessities.
C	F	Crisis Intervention	Assess the crisis the student is experiencing (1.current reaction, 2. significance, 3. availability of help, 4. coping strategies). Then assisting student to adapt to their situation, either by altering stressor or the student's response. Assist with managing health needs and accessing physical and mental health care system, provide community emergency numbers as needed. Assist with housing, food and other basic necessities
C	G	Family Support	Assistant family in planning so they may adjust favorably to life events. May include: assistance with housing, food and other basic necessities
C	H	Nurse Counseling	Provide information and guidance. May include: assistance with housing, food and other basic necessities, discussion, information giving, problem solving, guidance and identification of how this information, attitudes and values affect the health behavior and level of wellness. (Offer suggestions on parenting techniques/strategies/discuss normal growth and development/assist with managing physical and mental health needs or accessing health care system.)
E	A	Health Education	To provide knowledge or skill in health maintenance and promotion to students. May include: wound care/injury care/hand washing/dental/head lice/hygiene/growth and development/health issues and concerns/sleep/rest/utilization of health care system and community agencies/HIV and AIDS/asthma/diabetes)
E	B	Parent Education	To provide knowledge or skill in health maintenance and promotion to families. (Head lice/hygiene/growth and development/health issues and concerns/sleep/rest/utilization of health care system and community agencies)
E	D	Telephone Consultation	A telephone contact at which information is exchanged. (parent/guardian/health care provider or community agency)
F	A	Cold Application	Cold compress/ice applied to body part for the relief of pain or reduction of inflammation.
F	B	Comfort Measures	Techniques to soothe and console that will bring comfort.

F	C	Contact Lens Care	Help student care for contacts.
F	D	First Aid - Other	Deliver of health care not defined in the reference guide from DOH.
F	E	First Aid/Sick or Injuries Sch	Delivery of health care as outlined in the reference guide from the DOH "Sickness and Injuries at School" flip chart.
F	F	Heat Application	Heat applied to body part to relieve pain and promotes relaxation/rest. May include: warm compress/hot wash cloth or paper towel.
F	G	Monitoring	Observe with the purpose of collecting specified data over a period of time.
F	H	Observation in Health Room	While in health room, the act of noting and recording data while being observed for a period of time.
F	I	Basic Need Intervention	Provision of needed items for maintenance of wellness. May include: clothing, food, water, shelter, rest, medication.
F	J	Rest	To become or remain still, quiet, or inactive. (To rest in the health room for a period of time.)
F	K	Vital Signs Monitoring	Pulse, respiration, blood pressure and/or temperature.
L	A	Allergy Management	Address allergy symptoms. May include: administer prescribed or over-the-counter medication per district policy and procedure as directed by care plan, relax and take slow deep breaths, offer sips of tepid water, contact parent/nurse/emergency medical care prn. Cold wash cloth or paper towel to eyes. Wash area with soap and water.
L	B	Medication Administration	Observation of prescribed or over-the-counter medication per district policy and procedure.
L	C	Medication Observation	Observation of administered medication effectiveness or impact.
L	D	Nursing Assessment	Specific nursing observations and data collecting that are used in identifying a student's health status.
L	E	Pain Management	Interventions to address pain. May include: administer prescribed or over-the-counter medication/treatment per district policy and procedure/ice/elevation/relaxation breathing/moist heat. School Nurse; identify measures to help relieve and gain control over pain. assess effectiveness of prescribed medication/treatment.
L	F	Treatment or Procedure	Providing care per care-plan and district policy and procedures. May include: establishing the sequence of steps to follow in providing care for an individual. (Treatment may include: trach care/tube feedings/blood sugar monitoring following development of care plan (IHP,EHP) by School Nurse for delegation of specific approved treatments/procedures.)
M	A	Referral	To direct to a source for specific help or information (a community agency, school professional or health care provider)
M	B	Support per IEP	Provide care per Individual Education Plan (IEP). May include: monitor medication administration/treatment effectiveness. Develop health care plan and distribute to appropriate staff/update as needed. Communicate with teachers on concerns regarding health)
P	A	Health Screening	Provision of health screening. May include: mandated and non-mandated screenings (Vision, Scoliosis, Hearing) and general testing so as to collect data with the purpose of early detection of disease or disability.
P	B	Immunization	Administration, monitoring and/or counseling. May include: compliance based on Washington State Immunization laws. Communication with parents of students who are out of compliance.
P	C	Self Mngmt of Health Problem	Support/accommodate student self care. May include: independent diabetic care, self cath., etc.

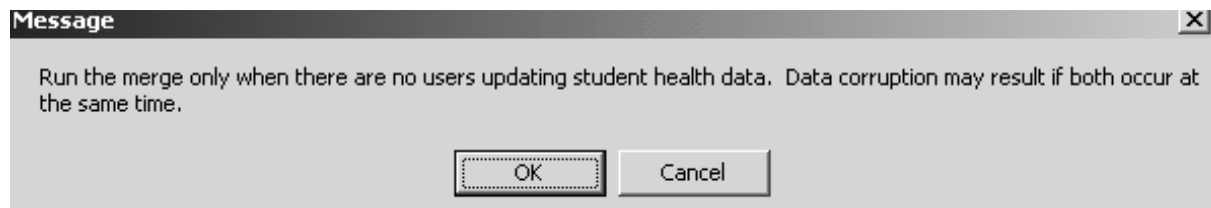
DOH Code Cleanup

This is an overview of the process for DOH code cleanup. Run this process to determine what DOH codes exist in the district Health Code table and what codes need to be merged or added to have all of the DOH health codes.

Before starting the code clean up process create a report with all current Health Conditions.

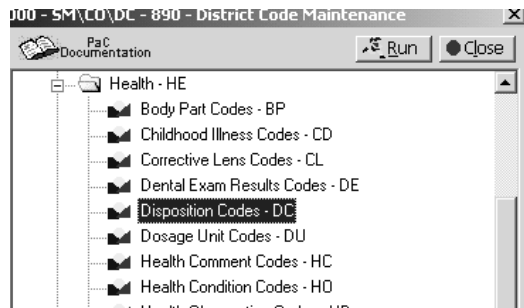
- From 000 entity run a Health Condition report from Low year of 0000 to High of current year and With Health Conditions Only, and then save as a Viewed Saved Report. This is your back copy document.

Health codes cannot be used while the merge clean up process is being done.

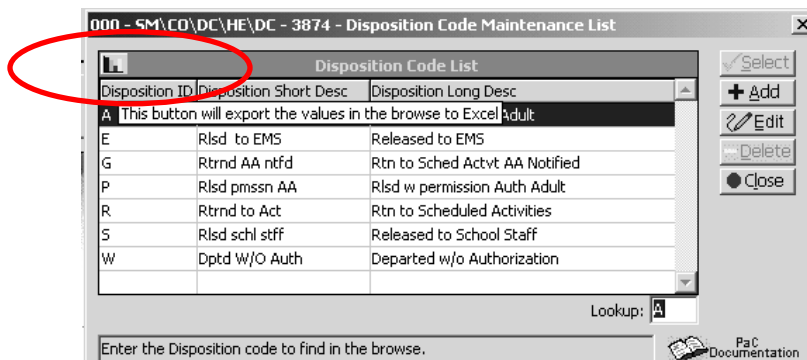


To check current district codes with standard DOH codes complete the following.

In WESPaC go to Health Code and select code table to check.



Drop into Excel using the Excel Icon.



Select the codes and copy.

Training and Learning 01 - DF93 - MetaFrame Presentation Server Client

Microsoft Excel - Book1

File Edit View Insert Format Tools Data Window Help

A2 fx A

	A	B	C
1	Disposition ID	Disposition Short D	Disposition Long Desc
2	A	Rlsd to AA	Rlsd to Authorized Adult
3	E	Rlsd to EMS	Released to EMS
4	G	Rtrnd AA ntfd	Rtn to Sched Actvt AA Notified
5	P	Rlsd pmssn AA	Rlsd w permission Auth Adult
6	R	Rtrnd to Act	Rtn to Scheduled Activities
7	S	Rlsd schl stff	Released to School Staff
8	W	Dptd W/O Auth	Departed w/o Authorization

Open a highlighted copy of the excel standard DOH code
 Go to the bottom of the Excel column A, to an empty cell and paste.

Microsoft Excel - DOH Disposition Codes.xls

File Edit View Insert Format Tools Data Window Help Adobe PDF

Arial 10 B I U

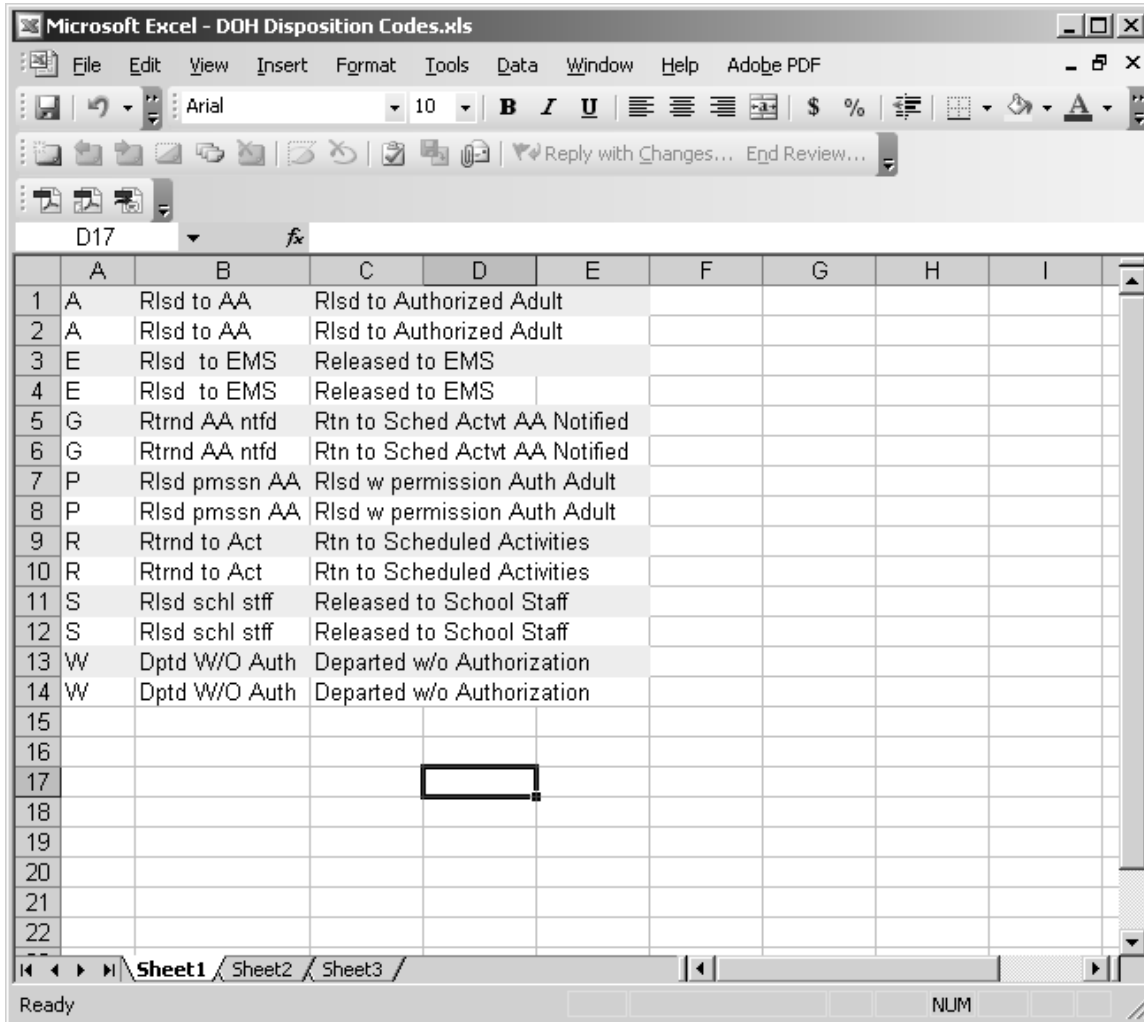
H17 fx

	A	B	C	D	E	F	G	H	I
1	A	Rlsd to AA	Rlsd to Authorized Adult						
2	E	Rlsd to EMS	Released to EMS						
3	G	Rtrnd AA ntfd	Rtn to Sched Actvt AA Notified						
4	P	Rlsd pmssn AA	Rlsd w permission Auth Adult						
5	R	Rtrnd to Act	Rtn to Scheduled Activities						
6	S	Rlsd schl stff	Released to School Staff						
7	W	Dptd W/O Auth	Departed w/o Authorization						
8									
9	A	Rlsd to AA	Rlsd to Authorized Adult						
10	E	Rlsd to EMS	Released to EMS						
11	G	Rtrnd AA ntfd	Rtn to Sched Actvt AA Notified						
12	P	Rlsd pmssn AA	Rlsd w permission Auth Adult						
13	R	Rtrnd to Act	Rtn to Scheduled Activities						
14	S	Rlsd schl stff	Released to School Staff						
15	W	Dptd W/O Auth	Departed w/o Authorization						
16									
17									
18									
19									
20									
21									
22									

Sheet1 Sheet2 Sheet3

Ready NUM

Select Excel sheet by clicking in the up left corner.
 From the **Data** drop down menu, select **Sort** and Sort by Column A



The DOH Codes will be yellow and the District Codes will be in white. This gives immediate comparison of DOH Codes and District Codes.

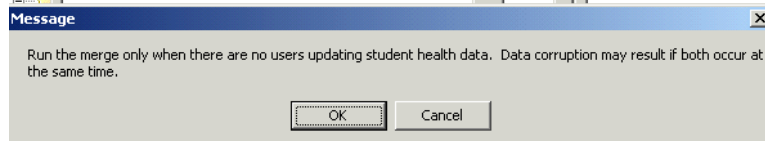
1. Look for yellow highlighted codes without a corresponding code. Non duplicated DOH codes will be populated when you run Add DOH Codes.
2. Look for white codes without any corresponding yellow highlighted codes. Those codes will need to be merged with the correct DOH Code.
3. If codes are the same but the descriptions are different this is a duplicate code and will need to be merged into the correct code and then the DOH code added.

DOH Standard Health Code Merge

Adding DOH Codes

Path: Student Mngmnt/State Rpt/Custom Processes Menu/Utilities

1. Select Health Code
2. Message will appear.

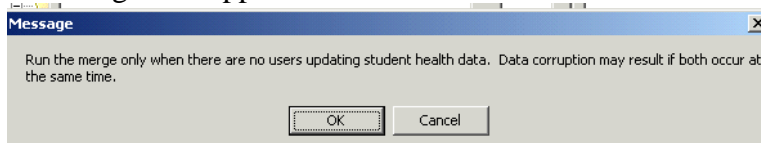


3. Click **OK** to continue.
4. Click on Add DOH Codes
5. Non-Duplicated DOH codes will be added to the district table.

Merging DOH Codes

Path: Student Mngmnt/State Rpt/Custom Processes Menu/Utilities

1. Select Health Code
2. Message will appear.



3. Click **OK** to continue.
4. Merge these codes to correct DOH code.
 - a. Highlight code to Eliminate.
 - b. Enter code to be merged to in Merge With Code column
 - c. Click **Run**.
5. Repeats merge process on each code.

